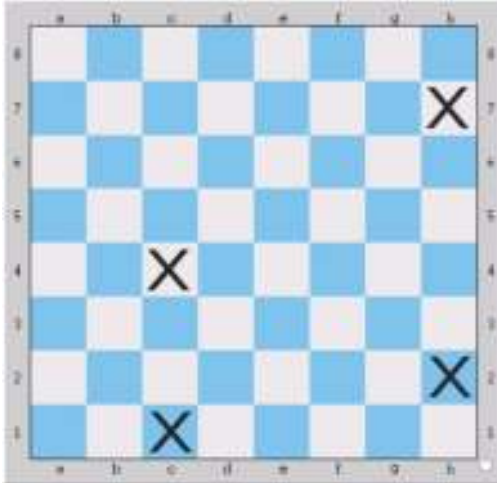


CHESS CHALLENGE: NAME AND FIND GAME

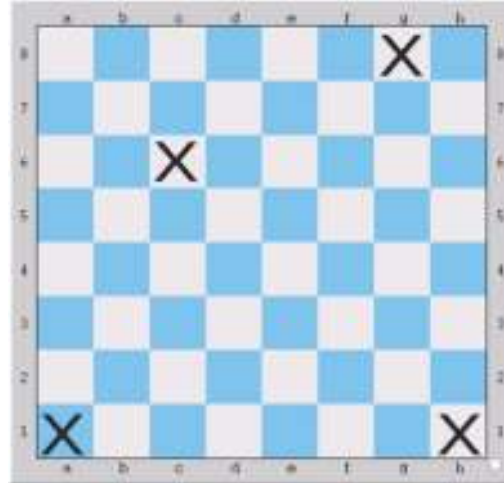
Objective: Name or find the squares shown in the examples below.

Instructions:

Write the name of the squares marked with an "X" in the boxes below.



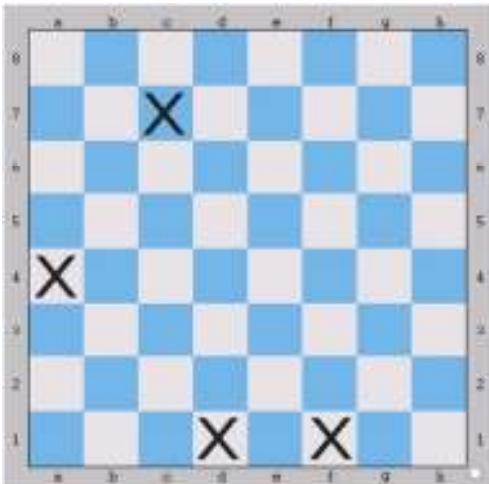
c1, c4, h2, h7



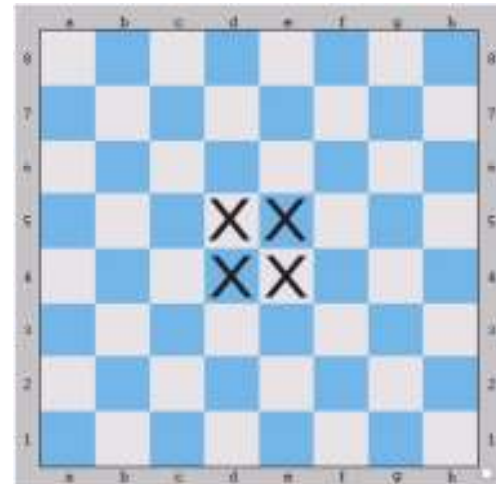
a1, c6, g8, h1

Instructions:

Place an "X" in the squares on the board that correspond to the names listed in the boxes below.



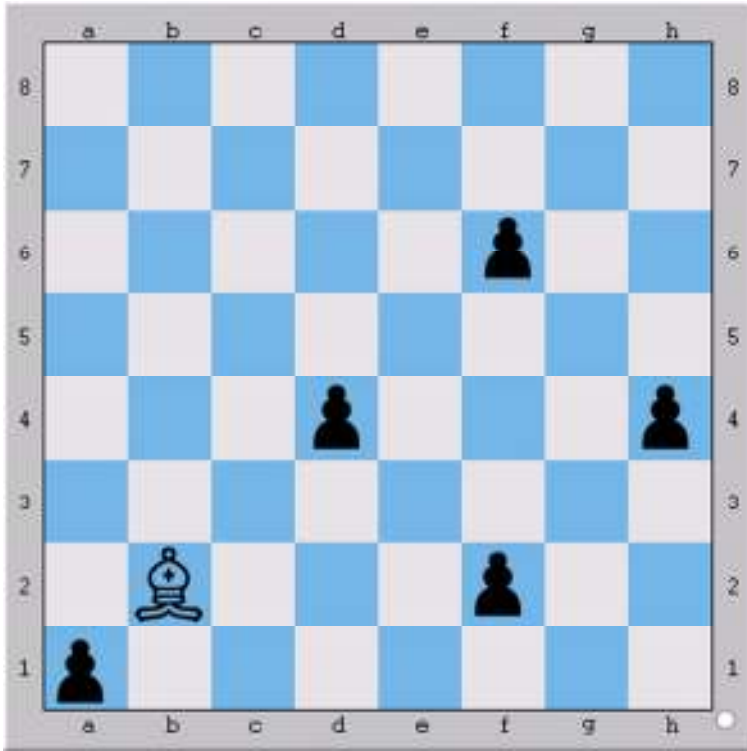
a4, c7, d1, f1



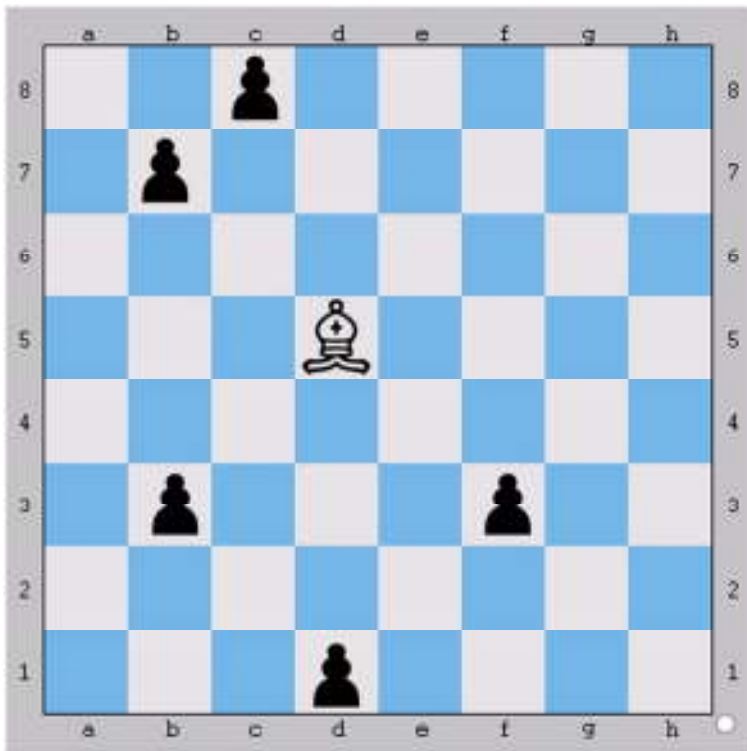
d4, e4, d5, e5

GO Get 'em BISHOP Challenge!

Solutions can be found at www.CharacterChess.org



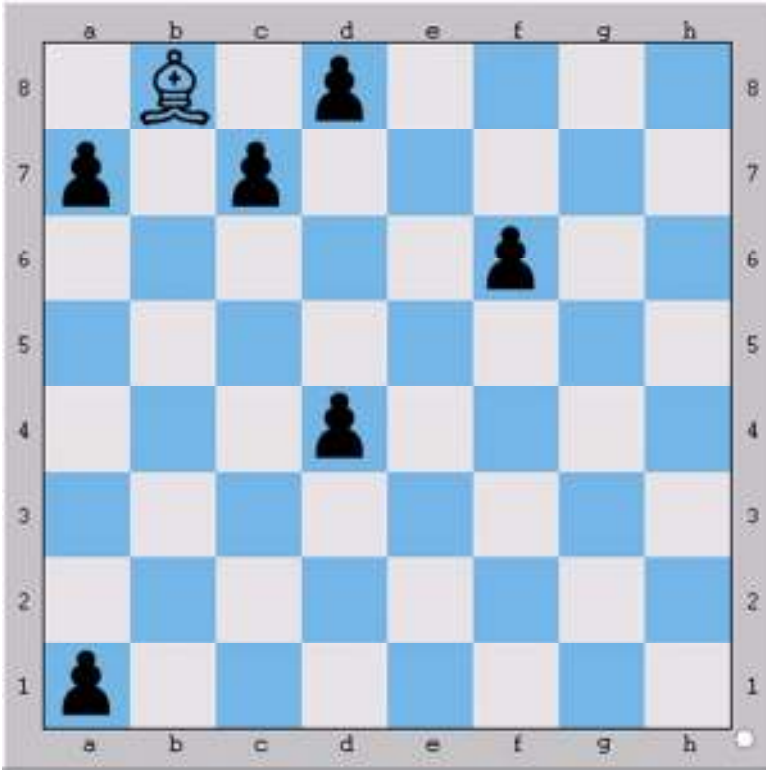
#	WHITE	BLACK
1	Bxa1	NO MOVE
2	Bxd4	NO MOVE
3	Bxf6	NO MOVE
4	Bxh4	NO MOVE
5	Bxf2	NO MOVE
6		NO MOVE
7		NO MOVE



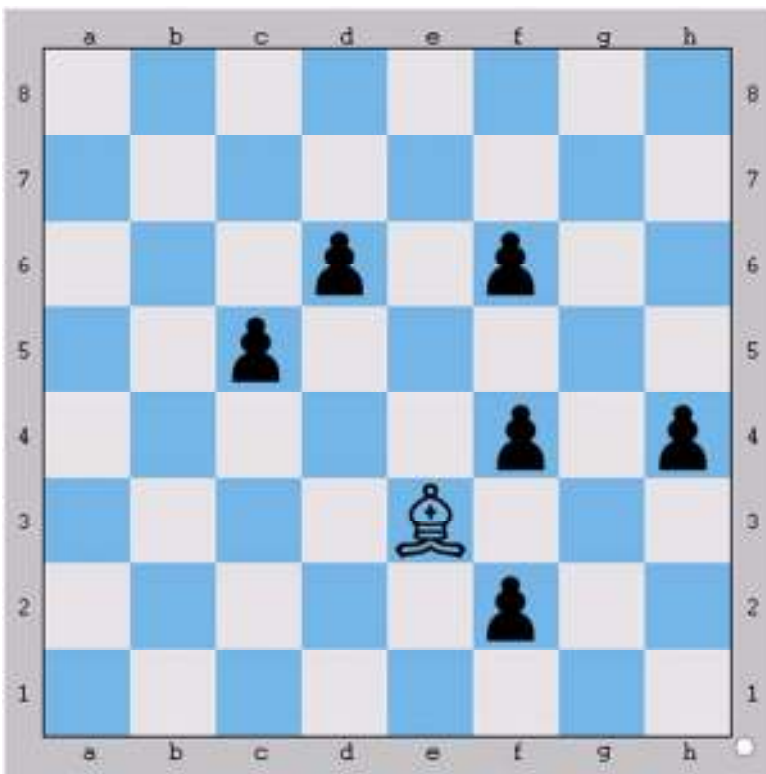
#	WHITE	BLACK
1	Bxb3	NO MOVE
2	Bxd1	NO MOVE
3	Bxf3	NO MOVE
4	Bxb7	NO MOVE
5	Bxc8	NO MOVE
6		NO MOVE
7		NO MOVE

GO Get 'em BISHOP Challenge!

Solutions can be found at www.CharacterChess.org



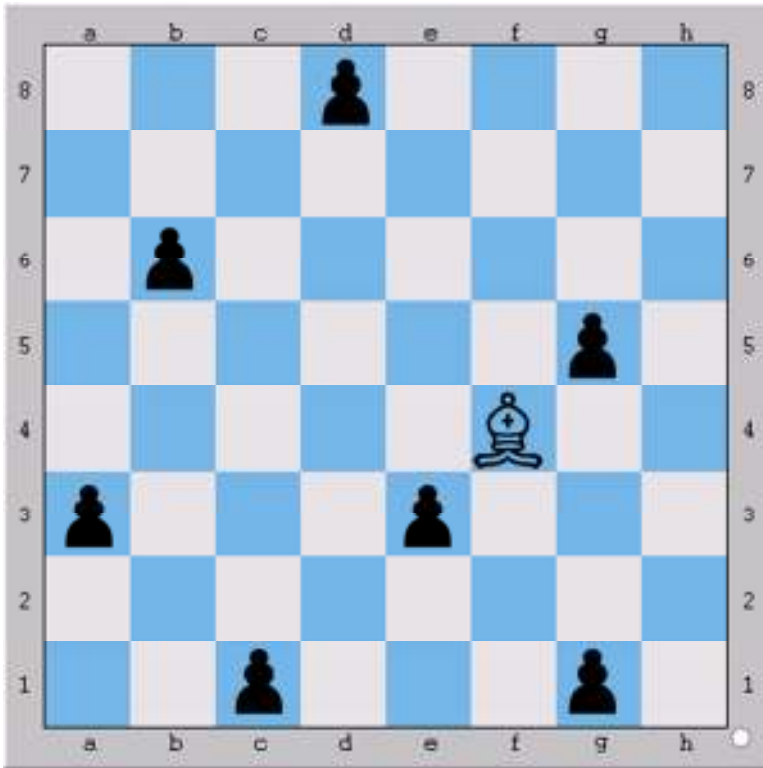
#	WHITE	BLACK
1	Bxa7	NO MOVE
2	Bxd4	NO MOVE
3	Bxa1	NO MOVE
4	Bxf6	NO MOVE
5	Bxd8	NO MOVE
6	Bxc7	NO MOVE
7		NO MOVE



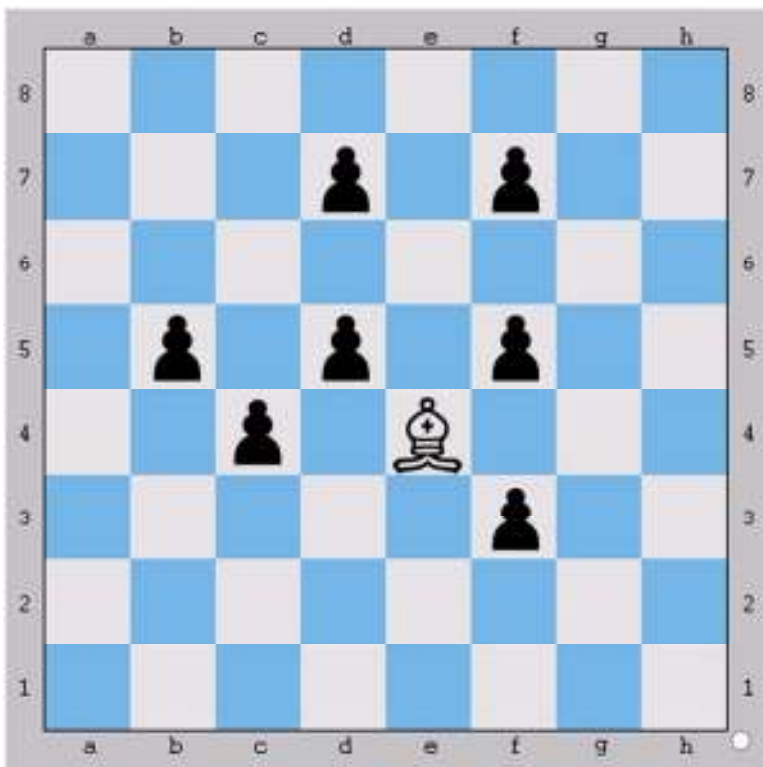
#	WHITE	BLACK
1	Bxf4	NO MOVE
2	Bxd6	NO MOVE
3	Bxc5	NO MOVE
4	Bxf2	NO MOVE
5	Bxh4	NO MOVE
6	Bxf6	NO MOVE
7		NO MOVE

GO Get 'em BISHOP Challenge!

Solutions can be found at www.CharacterChess.org



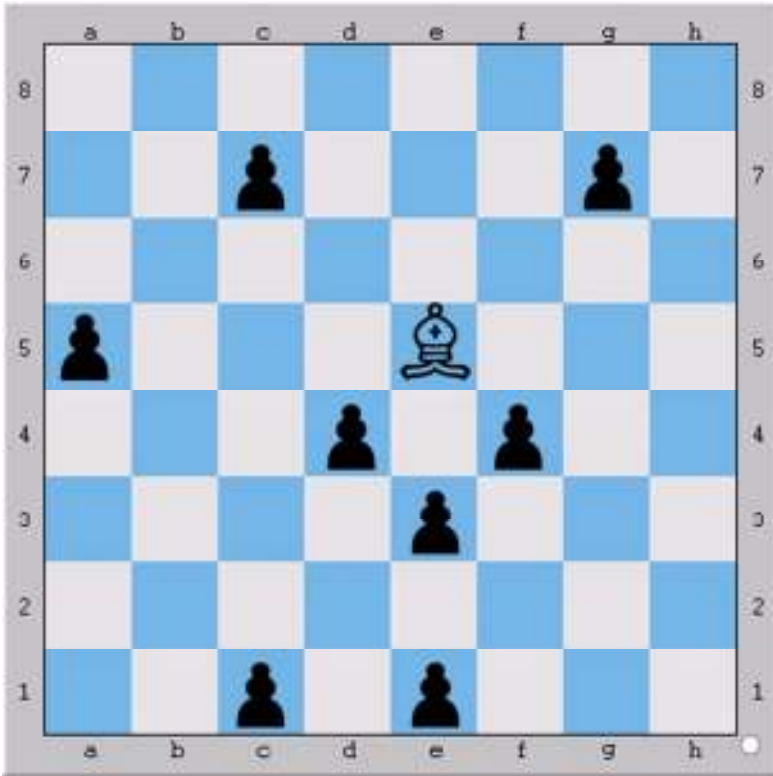
#	WHITE	BLACK
1	Bxe3	NO MOVE
2	Bxg1	NO MOVE
3	Bxb6	NO MOVE
4	Bxd8	NO MOVE
5	Bxg5	NO MOVE
6	Bxc1	NO MOVE
7		NO MOVE



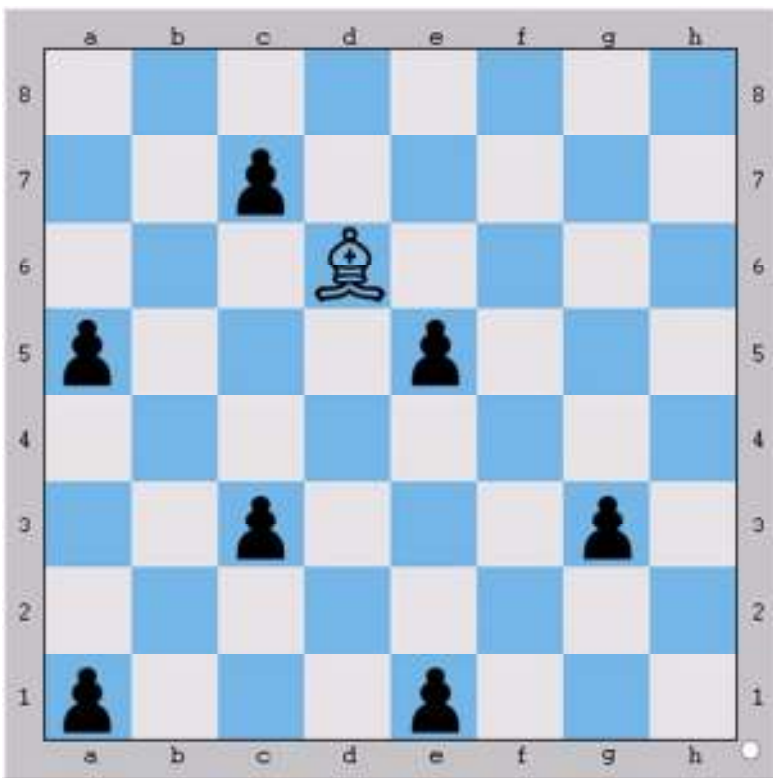
#	WHITE	BLACK
1	Bxf3	NO MOVE
2	Bxd5	NO MOVE
3	Bxf7	NO MOVE
4	Bxc4	NO MOVE
5	Bxb5	NO MOVE
6	Bxd7	NO MOVE
7	Bxf5	NO MOVE

GO Get 'em BISHOP Challenge!

Solutions can be found at www.CharacterChess.org

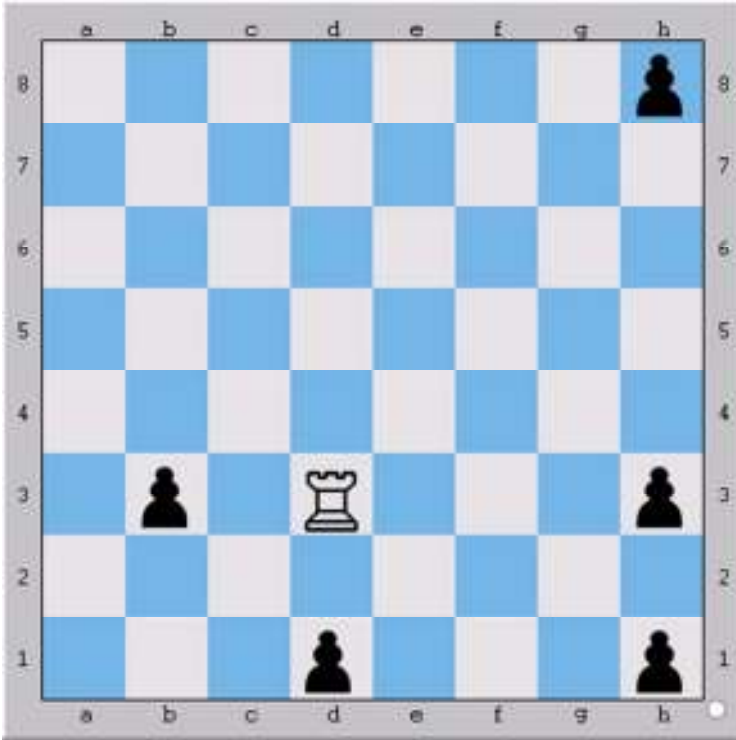


#	WHITE	BLACK
1	Bxg7	NO MOVE
2	Bxd4	NO MOVE
3	Bxe3	NO MOVE
4	Bxc1	NO MOVE
5	Bxf4	NO MOVE
6	Bxc7	NO MOVE
7	Bxa5	NO MOVE
8	Bxe1	NO MOVE

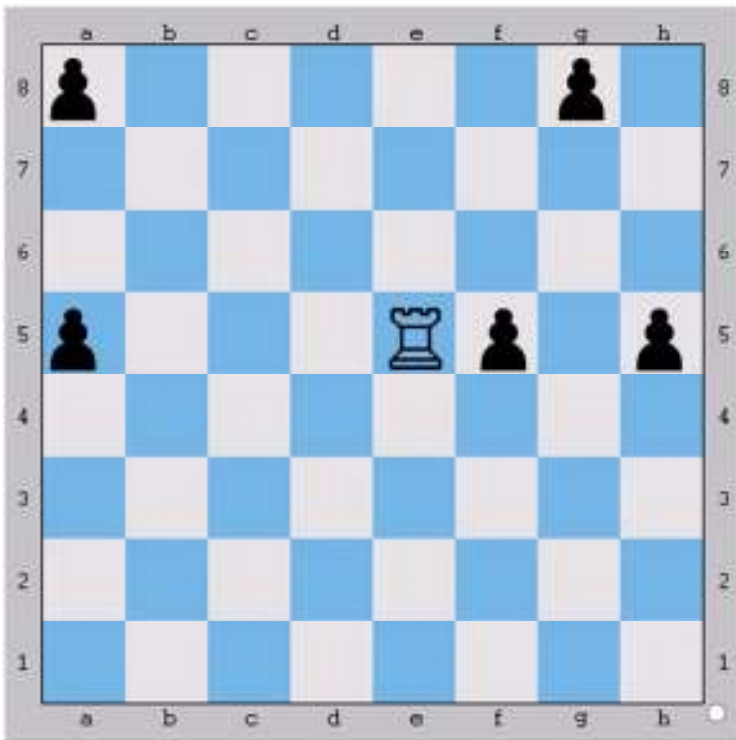


#	WHITE	BLACK
1	Bxc7	NO MOVE
2	Bxa5	NO MOVE
3	Bxc3	NO MOVE
4	Bxa1	NO MOVE
5	Bxe5	NO MOVE
6	Bxg3	NO MOVE
7	Bxe1	NO MOVE
8		NO MOVE

Go Get 'em ROOK Challenge!
Solutions can be found at www.CharacterChess.org

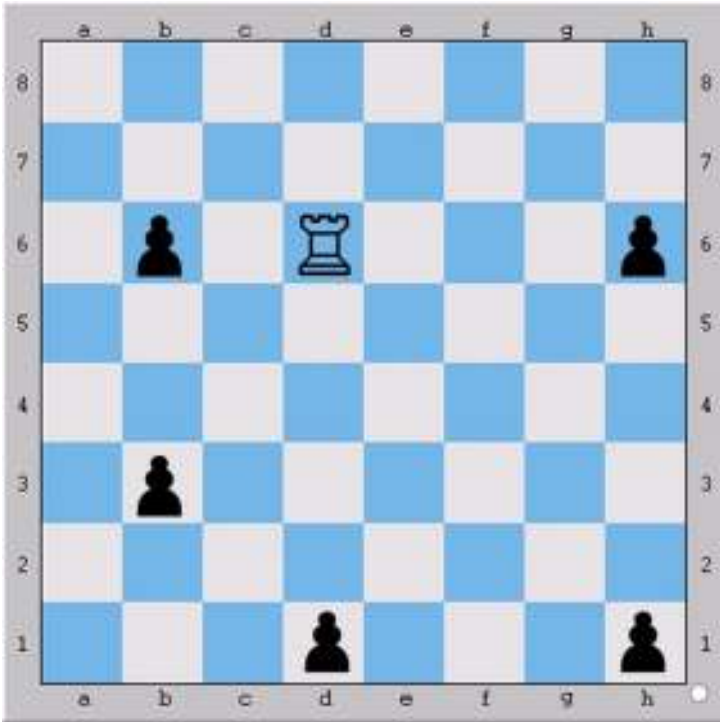


#	WHITE	BLACK
1	Rxb3	NO MOVE
2	Rxh3	NO MOVE
3	Rxh8	NO MOVE
4	Rxh1	NO MOVE
5	Rxd1	NO MOVE
6		NO MOVE
7		NO MOVE

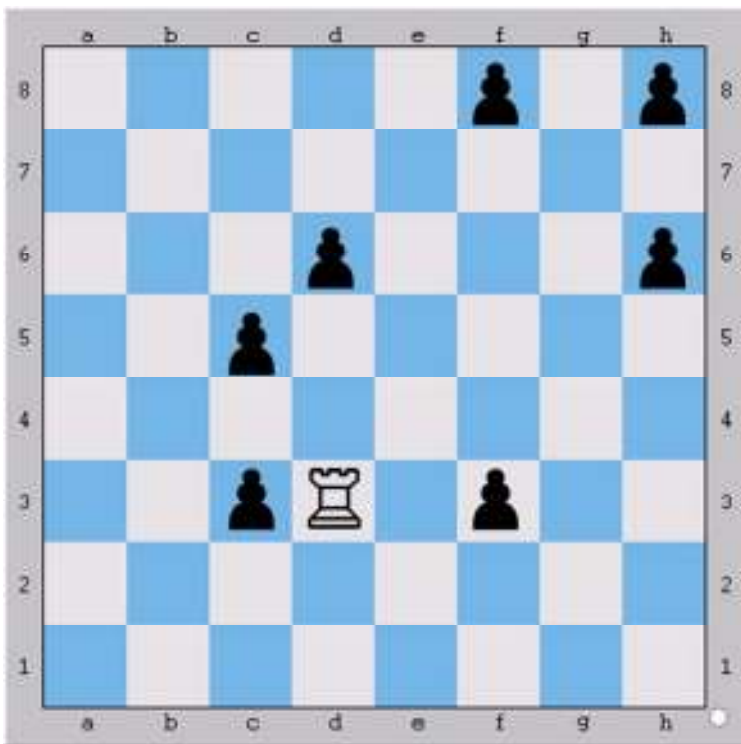


#	WHITE	BLACK
1	Rxf5	NO MOVE
2	Rxh5	NO MOVE
3	Rxa5	NO MOVE
4	Rxa8	NO MOVE
5	Rxg8	NO MOVE
6		NO MOVE
7		NO MOVE

Go Get 'em ROOK Challenge!
Solutions can be found at www.CharacterChess.org

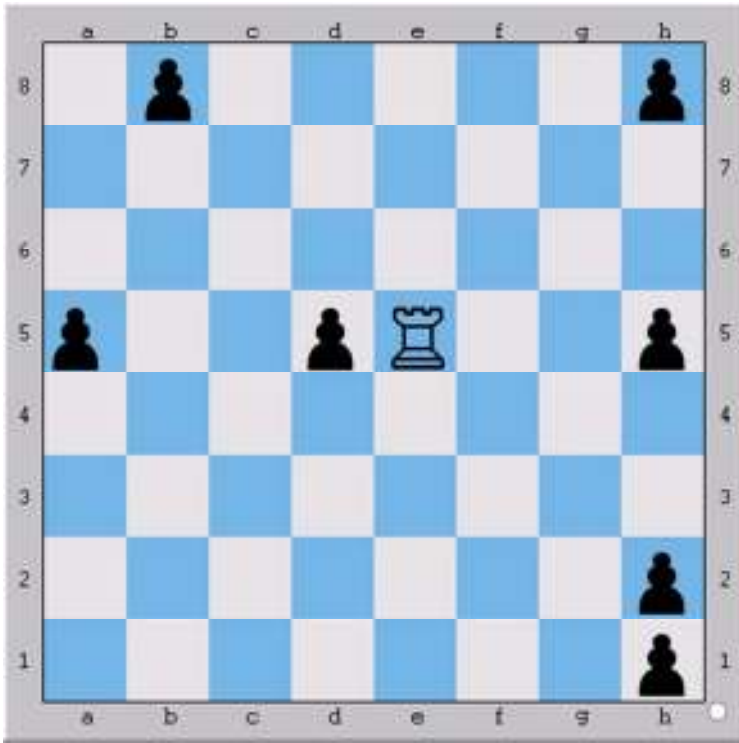


#	WHITE	BLACK
1	Rxd1	NO MOVE
2	Rxh1	NO MOVE
3	Rxh6	NO MOVE
4	Rxb6	NO MOVE
5		NO MOVE
6		NO MOVE
7		NO MOVE

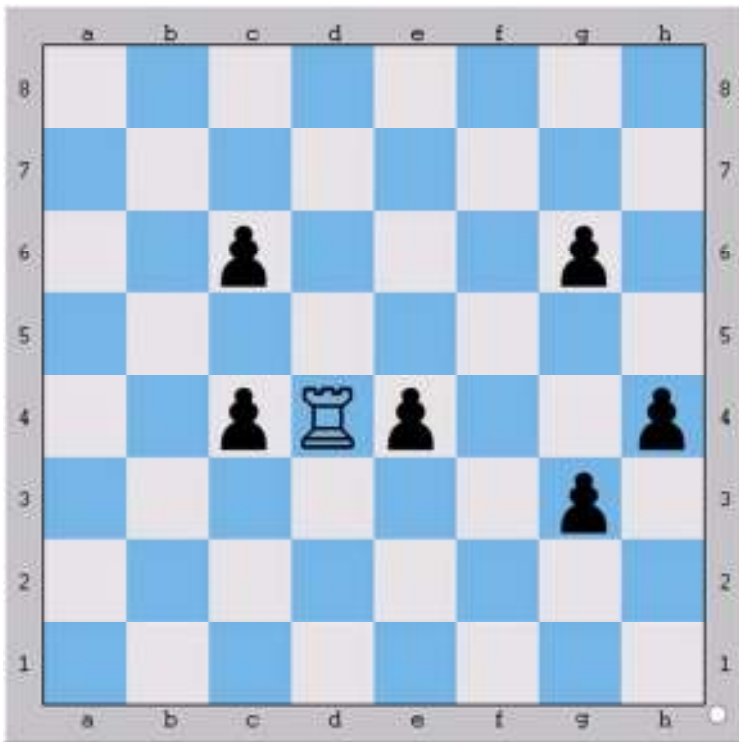


#	WHITE	BLACK
1	Rxd6	NO MOVE
2	Rxh6	NO MOVE
3	Rxf8	NO MOVE
4	Rxf3	NO MOVE
5	Rxc3	NO MOVE
6	Rxc5	NO MOVE
7		NO MOVE

Go Get 'em ROOK Challenge!
Solutions can be found at www.CharacterChess.org

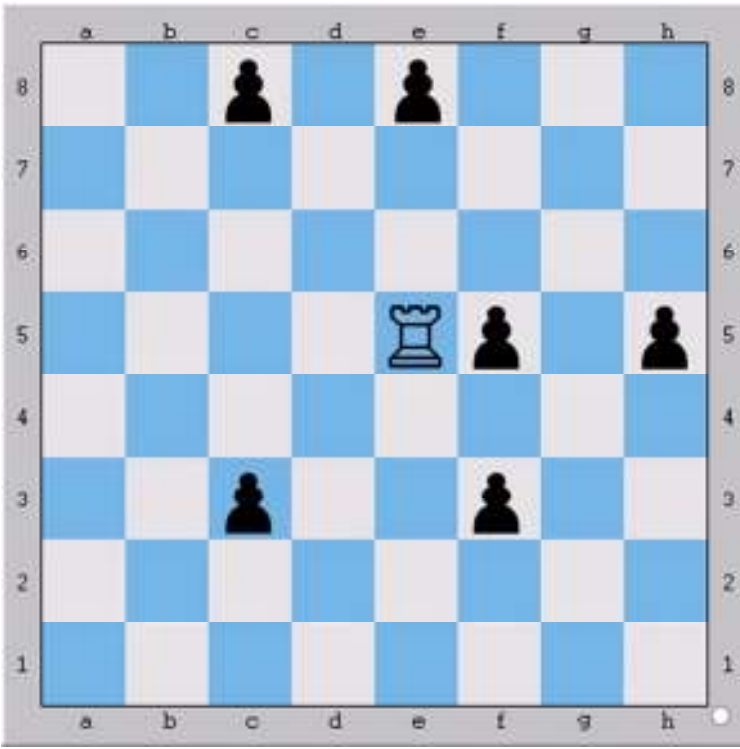


#	WHITE	BLACK
1	Rxd5	NO MOVE
2	Rxa5	NO MOVE
3	Rxh5	NO MOVE
4	Rxh2	NO MOVE
5	Rxh1	NO MOVE
6	Rxh8	NO MOVE
7	Rxb8	NO MOVE

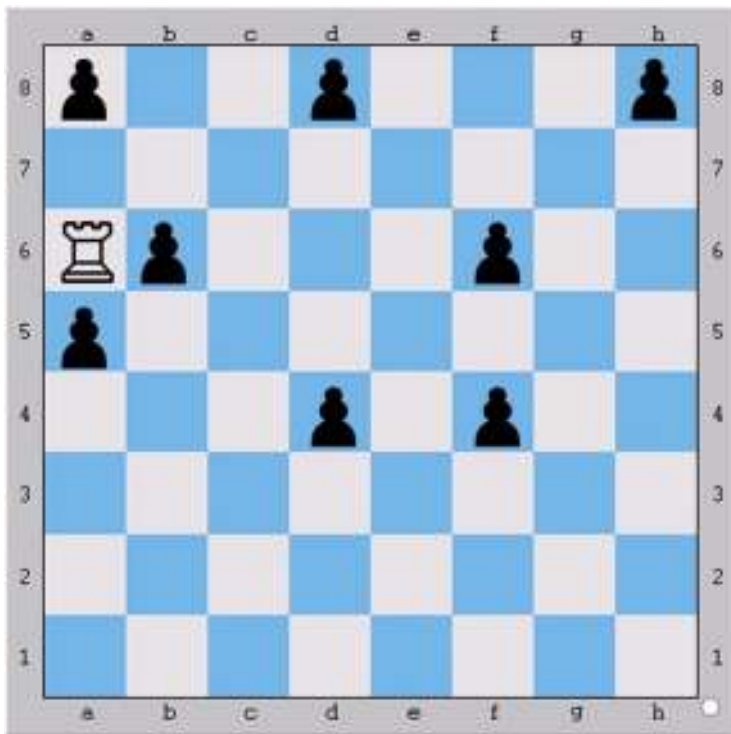


#	WHITE	BLACK
1	Rxe4	NO MOVE
2	Rxh4	NO MOVE
3	Rxc4	NO MOVE
4	Rxc6	NO MOVE
5	Rxg6	NO MOVE
6	Rxg3	NO MOVE
7		NO MOVE

Go Get 'em ROOK Challenge!
Solutions can be found at www.CharacterChess.org

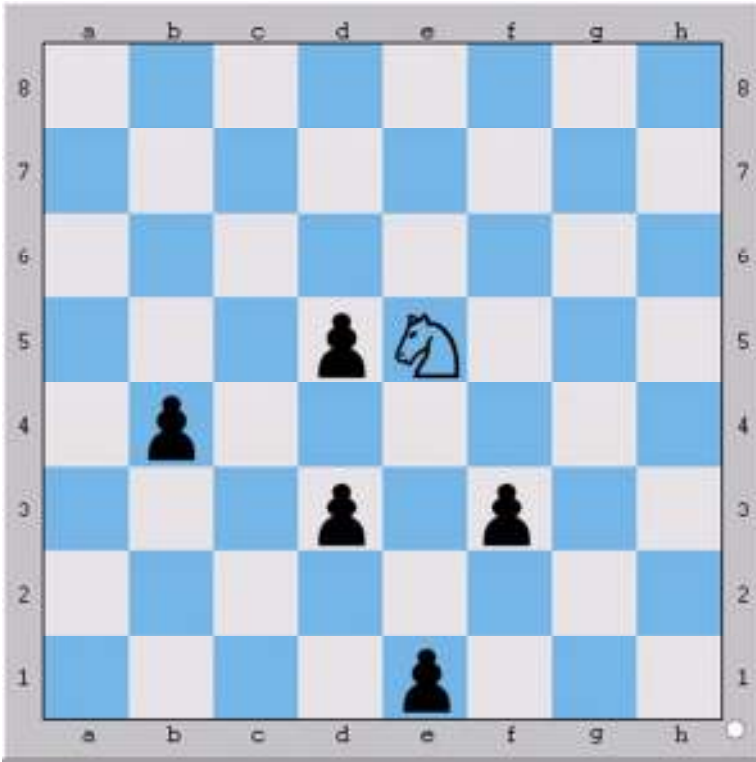


#	WHITE	BLACK
1	Rxe8	NO MOVE
2	Rxc8	NO MOVE
3	Rxc3	NO MOVE
4	Rxf3	NO MOVE
5	Rxf5	NO MOVE
6	Rxh5	NO MOVE
7		NO MOVE
8		NO MOVE

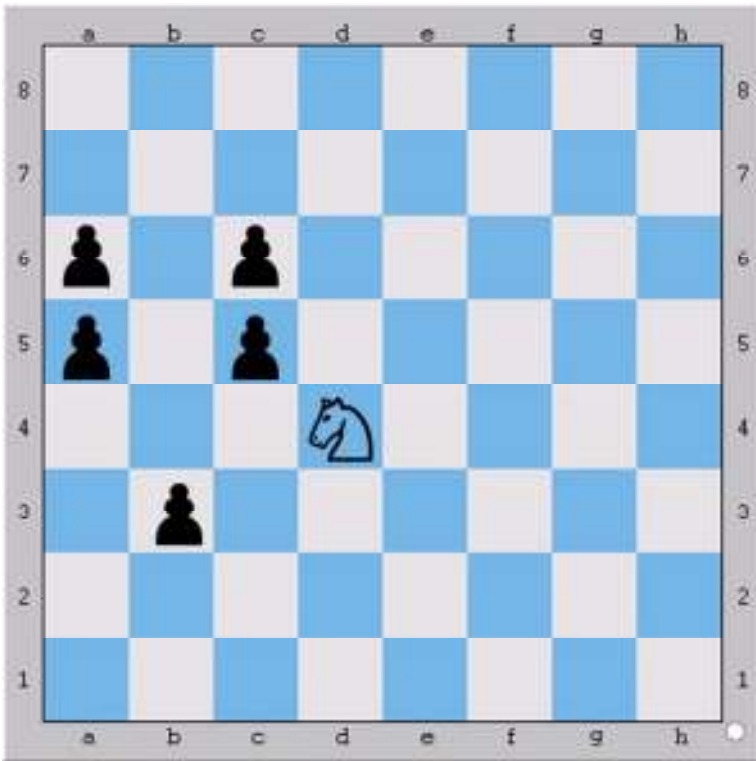


#	WHITE	BLACK
1	Rxb6	NO MOVE
2	Rxf6	NO MOVE
3	Rxf4	NO MOVE
4	Rxd4	NO MOVE
5	Rxd8	NO MOVE
6	Rxh8	NO MOVE
7	Rxa8	NO MOVE
8	Rxa5	NO MOVE

Go Get 'em KNIGHT Challenge!
Solutions can be found at www.CharacterChess.org

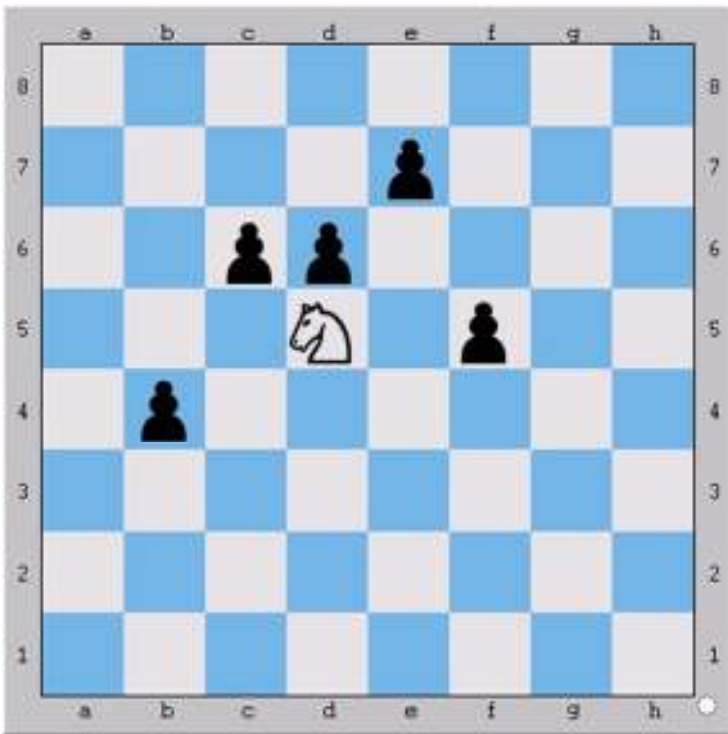
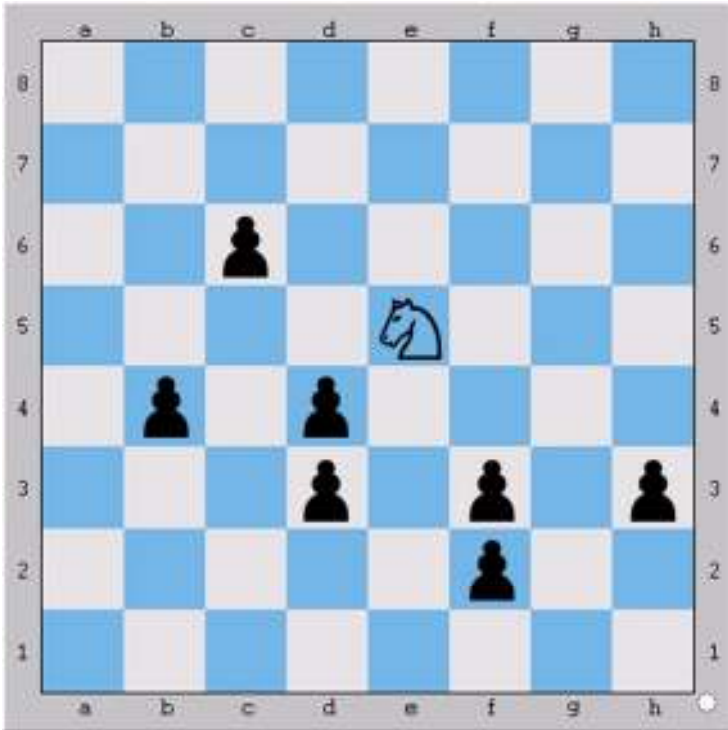


#	WHITE	BLACK
1	Nxf3	NO MOVE
2	Nxe1	NO MOVE
3	Nxd3	NO MOVE
4	Nxb4	NO MOVE
5	Nxd5	NO MOVE
6		NO MOVE
7		NO MOVE



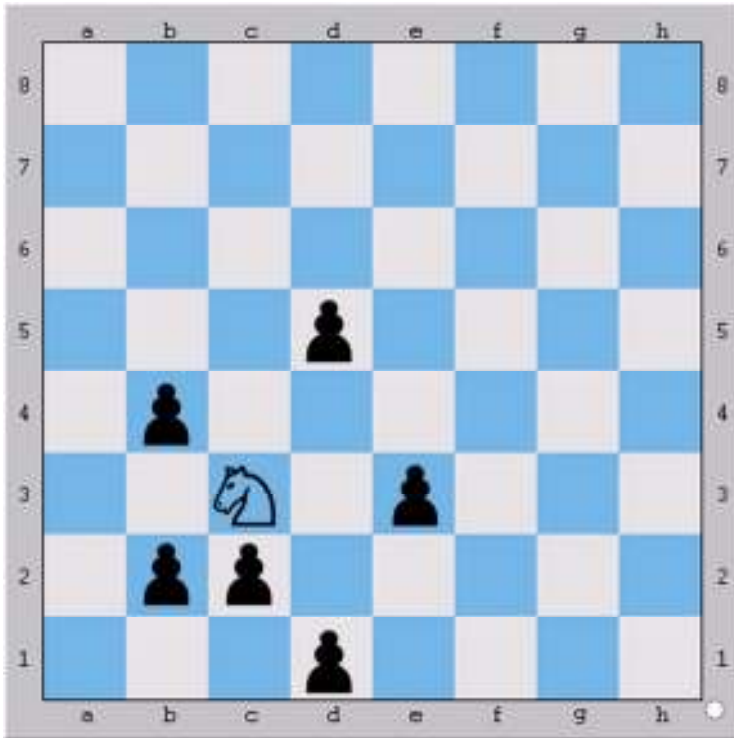
#	WHITE	BLACK
1	Nxc6	NO MOVE
2	Nxa5	NO MOVE
3	Nxb3	NO MOVE
4	Nxc5	NO MOVE
5	Nxa6	NO MOVE
6		NO MOVE
7		NO MOVE

Go Get 'em KNIGHT Challenge!
Solutions can be found at www.CharacterChess.org

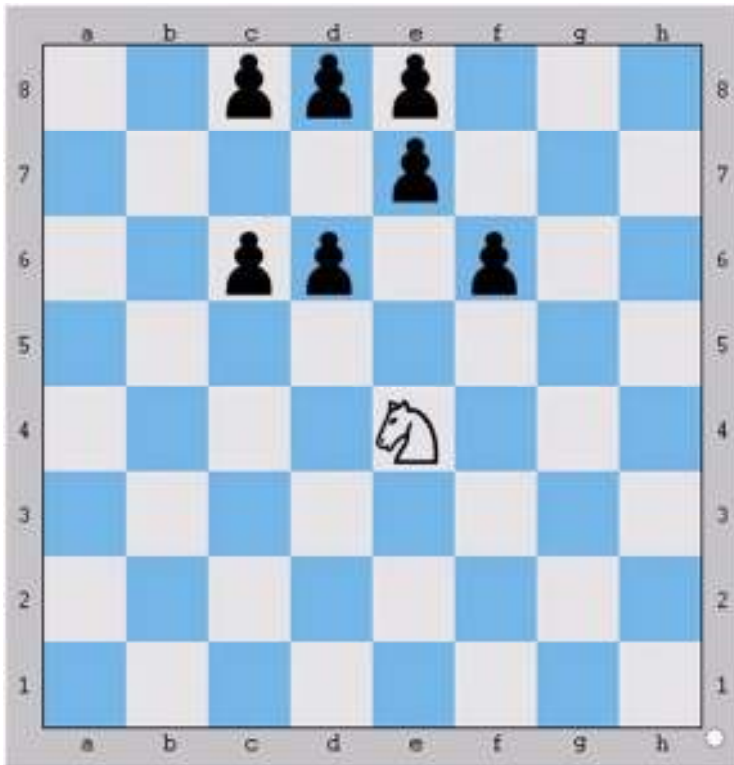


#	WHITE	BLACK
1	Nxf3	NO MOVE
2	Nxd4	NO MOVE
3	Nxc6	NO MOVE
4	Nxb4	NO MOVE
5	Nxd3	NO MOVE
6	Nxf2	NO MOVE
7	Nxh3	NO MOVE
#	WHITE	BLACK
1	Nxb4	NO MOVE
2	Nxc6	NO MOVE
3	Nxe7	NO MOVE
4	Nxf5	NO MOVE
5	Nxd6	NO MOVE
6		NO MOVE
7		NO MOVE

Go Get 'em KNIGHT Challenge!
Solutions can be found at www.CharacterChess.org

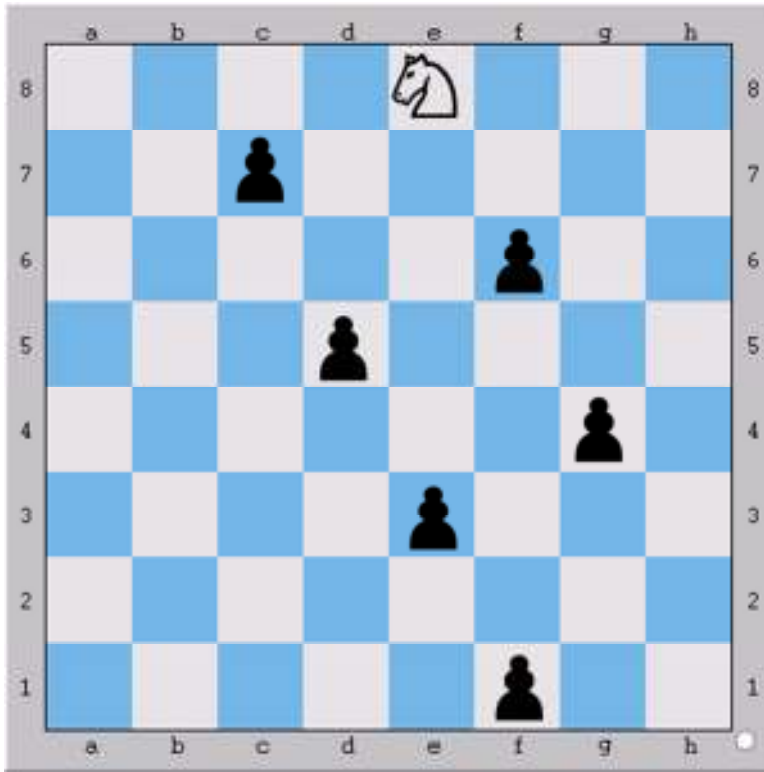


#	WHITE	BLACK
1	Nxd5	NO MOVE
2	Nxb4	NO MOVE
3	Nxc2	NO MOVE
4	Nxe3	NO MOVE
5	Nxd1	NO MOVE
6	Nxb2	NO MOVE
7		NO MOVE

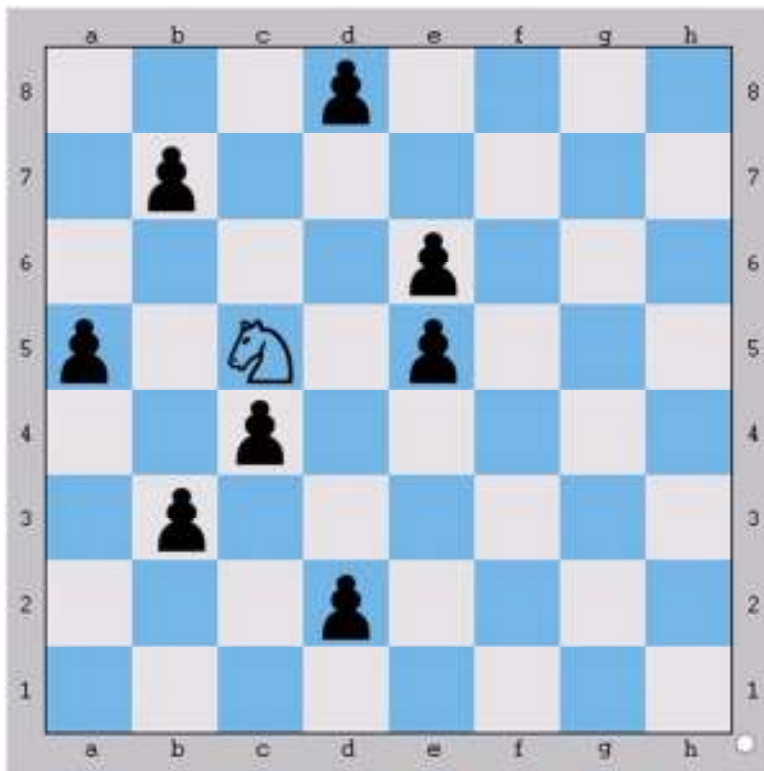


#	WHITE	BLACK
1	Nxf6	NO MOVE
2	Nxe8	NO MOVE
3	Nxd6	NO MOVE
4	Nxc8	NO MOVE
5	Nxe7	NO MOVE
6	Nxc6	NO MOVE
7	Nxd8	NO MOVE

Go Get 'em KNIGHT Challenge!
Solutions can be found at www.CharacterChess.org

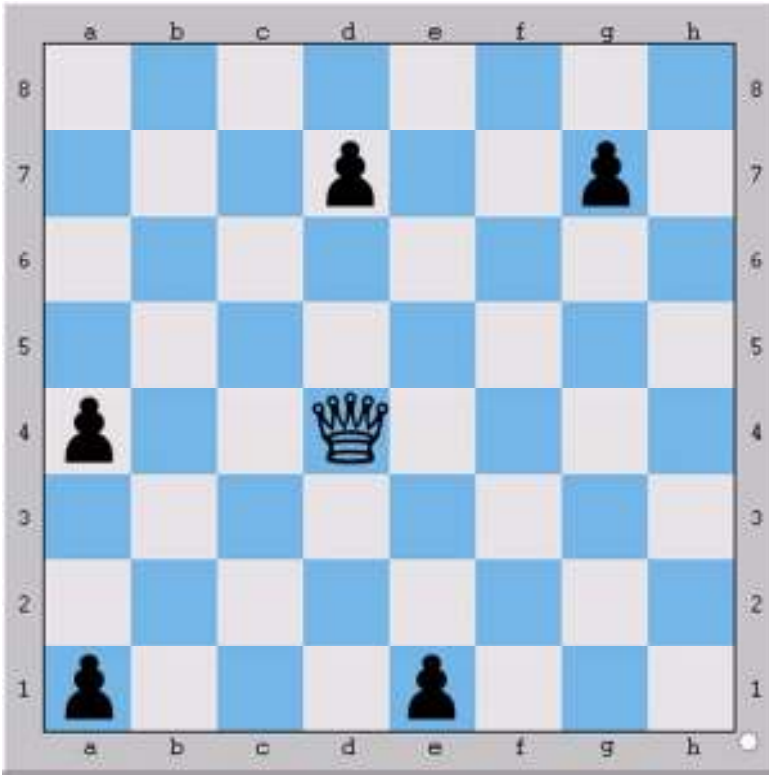


#	WHITE	BLACK
1	Nxc7	NO MOVE
2	Nxd5	NO MOVE
3	Nxf6	NO MOVE
4	Nxg4	NO MOVE
5	Nxe3	NO MOVE
6	Nxf1	NO MOVE
7		NO MOVE
8		NO MOVE

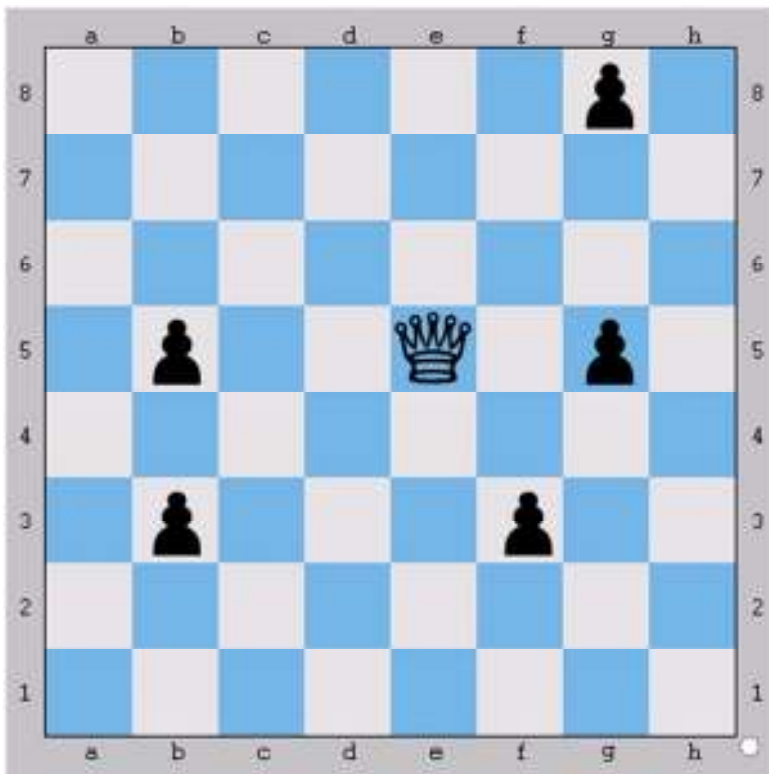


#	WHITE	BLACK
1	Nxe6	NO MOVE
2	Nxd8	NO MOVE
3	Nxb7	NO MOVE
4	Nxa5	NO MOVE
5	Nxb3	NO MOVE
6	Nxd2	NO MOVE
7	Nxc4	NO MOVE
8	Nxe5	NO MOVE

Go Get 'em QUEEN Challenge!
Solutions can be found at www.CharacterChess.org

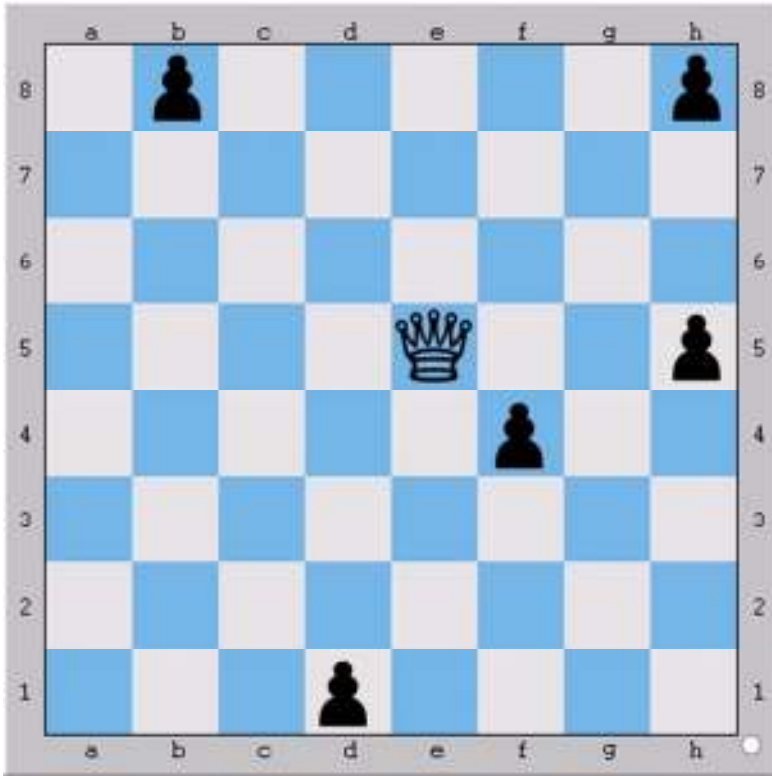


#	WHITE	BLACK
1	Qxa4	NO MOVE
2	Qxd7	NO MOVE
3	Qxg7	NO MOVE
4	Qxa1	NO MOVE
5	Qxe1	NO MOVE
6		NO MOVE
7		NO MOVE

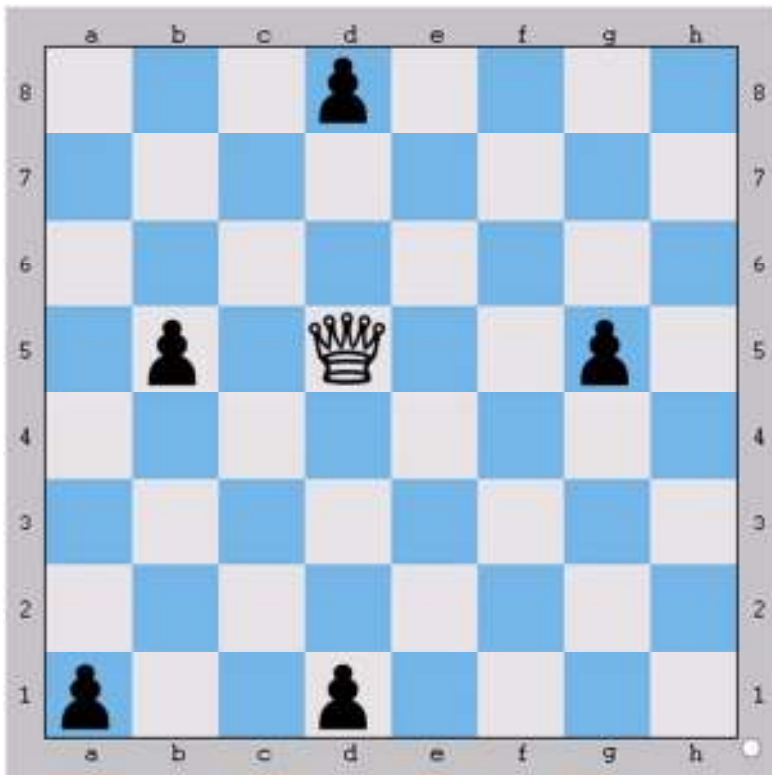


#	WHITE	BLACK
1	Qxb5	NO MOVE
2	Qxg5	NO MOVE
3	Qxg8	NO MOVE
4	Qxb3	NO MOVE
5	Qxf3	NO MOVE
6		NO MOVE
7		NO MOVE

Go Get `em QUEEN Challenge!
Solutions can be found at www.CharacterChess.org

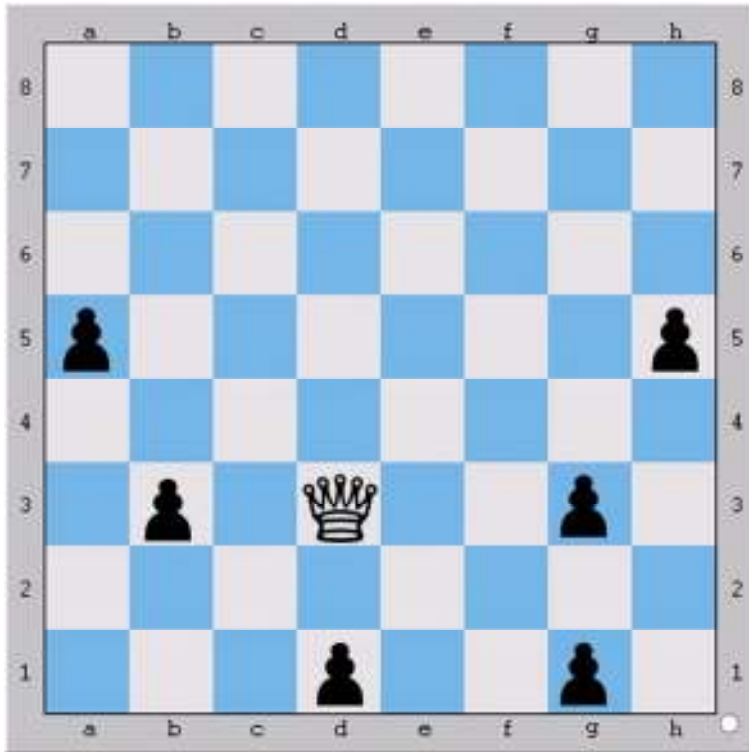


#	WHITE	BLACK
1	Qxf4	NO MOVE
2	Qxb8	NO MOVE
3	Qxh8	NO MOVE
4	Qxh5	NO MOVE
5	Qxd1	NO MOVE
6		NO MOVE
7		NO MOVE

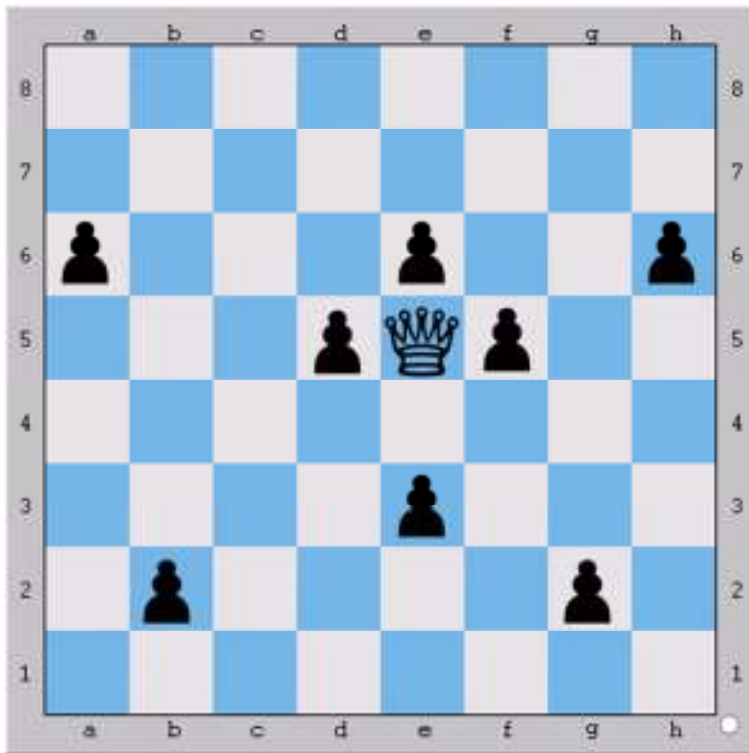


#	WHITE	BLACK
1	Qxb5	NO MOVE
2	Qxg5	NO MOVE
3	Qxd8	NO MOVE
4	Qxd1	NO MOVE
5	Qxa1	NO MOVE
6		NO MOVE
7		NO MOVE

Go Get 'em QUEEN Challenge!
Solutions can be found at www.CharacterChess.org

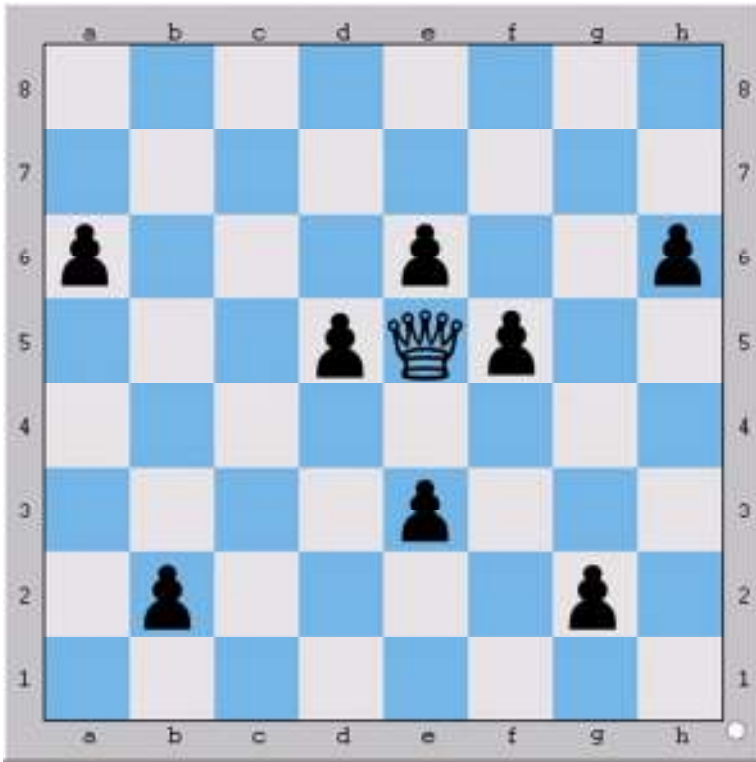


#	WHITE	BLACK
1	Qxb3	NO MOVE
2	Qxg3	NO MOVE
3	Qxg1	NO MOVE
4	Qxd1	NO MOVE
5	Qxh5	NO MOVE
6	Qxa5	NO MOVE
7		NO MOVE
8		NO MOVE

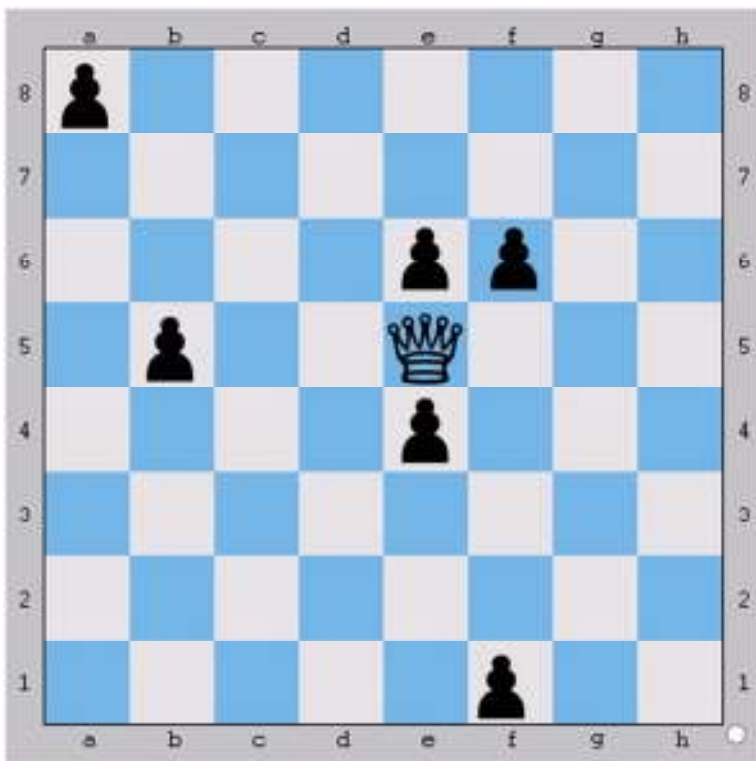


#	WHITE	BLACK
1	Qxb2	NO MOVE
2	Qxg2	NO MOVE
3	Qxd5	NO MOVE
4	Qxf5	NO MOVE
5	Qxe6	NO MOVE
6	Qxa6	NO MOVE
7	Qxh6	NO MOVE
8	Qxe3	NO MOVE

Go Get 'em QUEEN Challenge!
Solutions can be found at www.CharacterChess.org



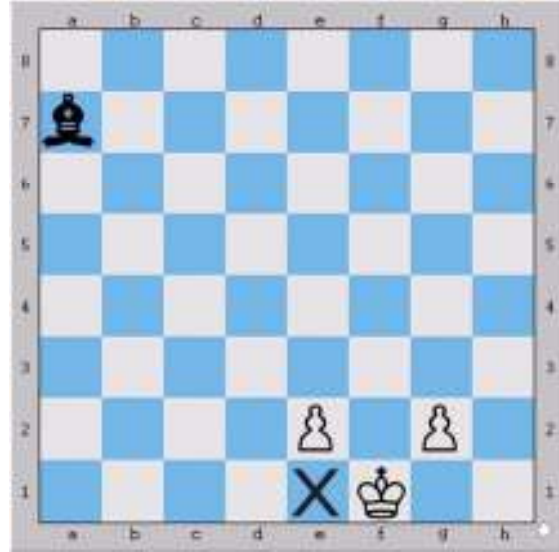
#	WHITE	BLACK
1	Qxb2	NO MOVE
2	Qxg2	NO MOVE
3	Qxd5	NO MOVE
4	Qxf5	NO MOVE
5	Qxe6	NO MOVE
6	Qxa6	NO MOVE
7	Qxh6	NO MOVE
8	Qxe3	NO MOVE



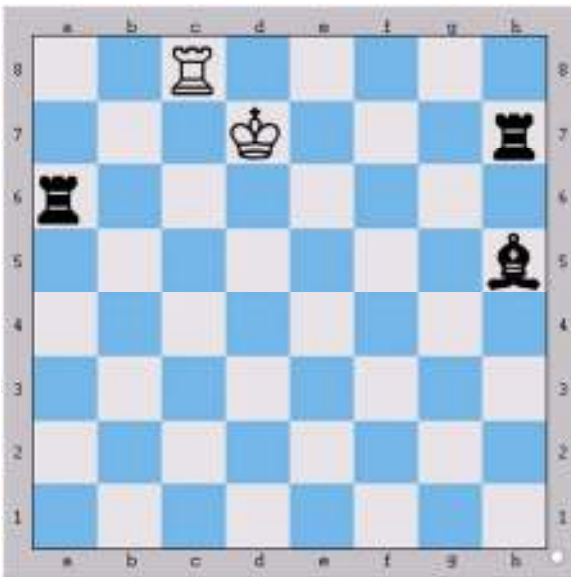
#	WHITE	BLACK
1	Qxb5	NO MOVE
2	Qxf1	NO MOVE
3	Qxf6	NO MOVE
4	Qxe4	NO MOVE
5	Qxa8	NO MOVE
6		NO MOVE
7		NO MOVE
8		NO MOVE

CHES CHALLENGE: The KINGS ESCAPE!

Choose the Legal Move for the King (K).
 Solutions can be found at www.CharacterChess.org



#	WHITE	BLACK
	Ke1	NO MOVE



#	WHITE	BLACK
	Kd8	NO MOVE

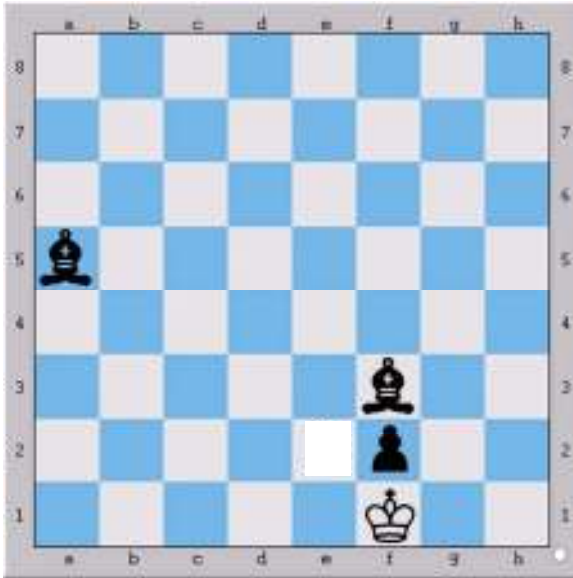
#	WHITE	BLACK
	Ke8	NO MOVE

THE KING'S ESCAPE Choose the escape

CHARACTER CHESS: 10 Character Lessons Through The Game of Chess

move for the King.

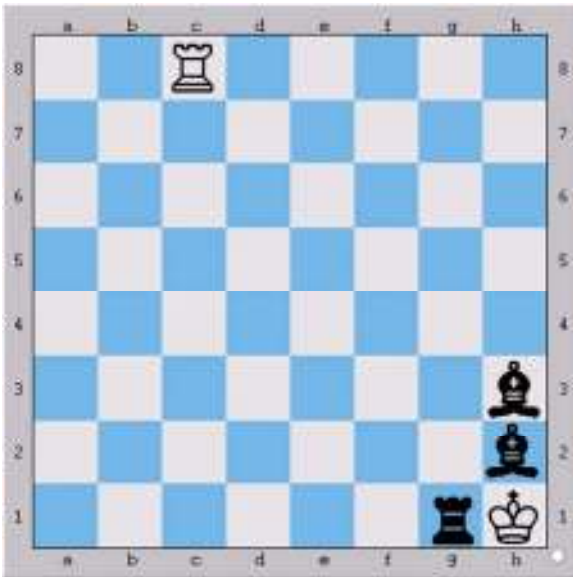
Solutions can be found at www.CharacterChess.org



#	WHITE	BLACK
	Kxf2	NO MOVE



#	WHITE	BLACK
	Rc1	NO MOVE



#	WHITE	BLACK
	Kxh2	NO MOVE



#	WHITE	BLACK
	Kxg1	NO MOVE

FIND THE CHECKMATE: Solutions can be found at www.CharacterChess.org



White to move: Qxf5



White to move: Bxf7







White to move: b4



White to move: Qxh7

FIND THE CHECKMATE: Solutions can be found at www.CharacterChess.org

 <p>A chessboard diagram showing a complex position. White pieces are on e3, f3, g3, h3, d4, e4, f4, g4, h4, and f5. Black pieces are on a8, b8, c8, d8, e8, f8, g8, h8, a7, b7, c7, d7, e7, f7, g7, h7, a6, b6, c6, d6, e6, f6, g6, h6, a5, b5, c5, d5, e5, f5, g5, h5, a4, b4, c4, d4, e4, f4, g4, h4, a3, b3, c3, d3, e3, f3, g3, h3, a2, b2, c2, d2, e2, f2, g2, h2, a1, b1, c1, d1, e1, f1, g1, h1, a0, b0, c0, d0, e0, f0, g0, h0.</p>	 <p>A chessboard diagram showing a complex position. White pieces are on e3, f3, g3, h3, d4, e4, f4, g4, h4, and f5. Black pieces are on a8, b8, c8, d8, e8, f8, g8, h8, a7, b7, c7, d7, e7, f7, g7, h7, a6, b6, c6, d6, e6, f6, g6, h6, a5, b5, c5, d5, e5, f5, g5, h5, a4, b4, c4, d4, e4, f4, g4, h4, a3, b3, c3, d3, e3, f3, g3, h3, a2, b2, c2, d2, e2, f2, g2, h2, a1, b1, c1, d1, e1, f1, g1, h1, a0, b0, c0, d0, e0, f0, g0, h0.</p>
<p>White to move: Bxf7</p>	<p>White to move: Qf8</p>
 <p>A chessboard diagram showing a complex position. White pieces are on e3, f3, g3, h3, d4, e4, f4, g4, h4, and f5. Black pieces are on a8, b8, c8, d8, e8, f8, g8, h8, a7, b7, c7, d7, e7, f7, g7, h7, a6, b6, c6, d6, e6, f6, g6, h6, a5, b5, c5, d5, e5, f5, g5, h5, a4, b4, c4, d4, e4, f4, g4, h4, a3, b3, c3, d3, e3, f3, g3, h3, a2, b2, c2, d2, e2, f2, g2, h2, a1, b1, c1, d1, e1, f1, g1, h1, a0, b0, c0, d0, e0, f0, g0, h0.</p>	 <p>A chessboard diagram showing a complex position. White pieces are on e3, f3, g3, h3, d4, e4, f4, g4, h4, and f5. Black pieces are on a8, b8, c8, d8, e8, f8, g8, h8, a7, b7, c7, d7, e7, f7, g7, h7, a6, b6, c6, d6, e6, f6, g6, h6, a5, b5, c5, d5, e5, f5, g5, h5, a4, b4, c4, d4, e4, f4, g4, h4, a3, b3, c3, d3, e3, f3, g3, h3, a2, b2, c2, d2, e2, f2, g2, h2, a1, b1, c1, d1, e1, f1, g1, h1, a0, b0, c0, d0, e0, f0, g0, h0.</p>
<p>White to move: Rd8</p>	<p>White to move: Qc7</p>

CHARACTER CHESS: 10 Character Lessons Through The Game of Chess

CHES CHALLENGE: **MAKE THE BEST MOVE**

Objective: In this challenge, your job is to make the best move! White to move. Be careful, and remember the two questions discussed above.

<p>Circle Ans: Rxh5 / c8 / Rh8+</p>	<p>Circle Ans: Bxe5 / Qxf3 / Bxc5+</p>
<p>Circle Ans: Qxf7 / Rxf7 / Qc8+</p>	<p>Circle Ans: Nxc6 / Nxb7 / Qxb7</p>

CHARACTER CHESS: 10 Character Lessons Through The Game of Chess

<p>Write Ans: f8!</p>	<p>Write Ans: Qxa8</p>
<p>Write Ans: g5xf6+</p>	<p>Write Ans: Bxd4</p>

Solutions can be found at www.CharacterChess.org